

# Lower Thames Crossing

## 6.2 Environmental Statement Figures

### Figure 13.1 - Population and Human Health Baseline – Private Property & Housing, Development Land & Businesses, Community Land & Asset

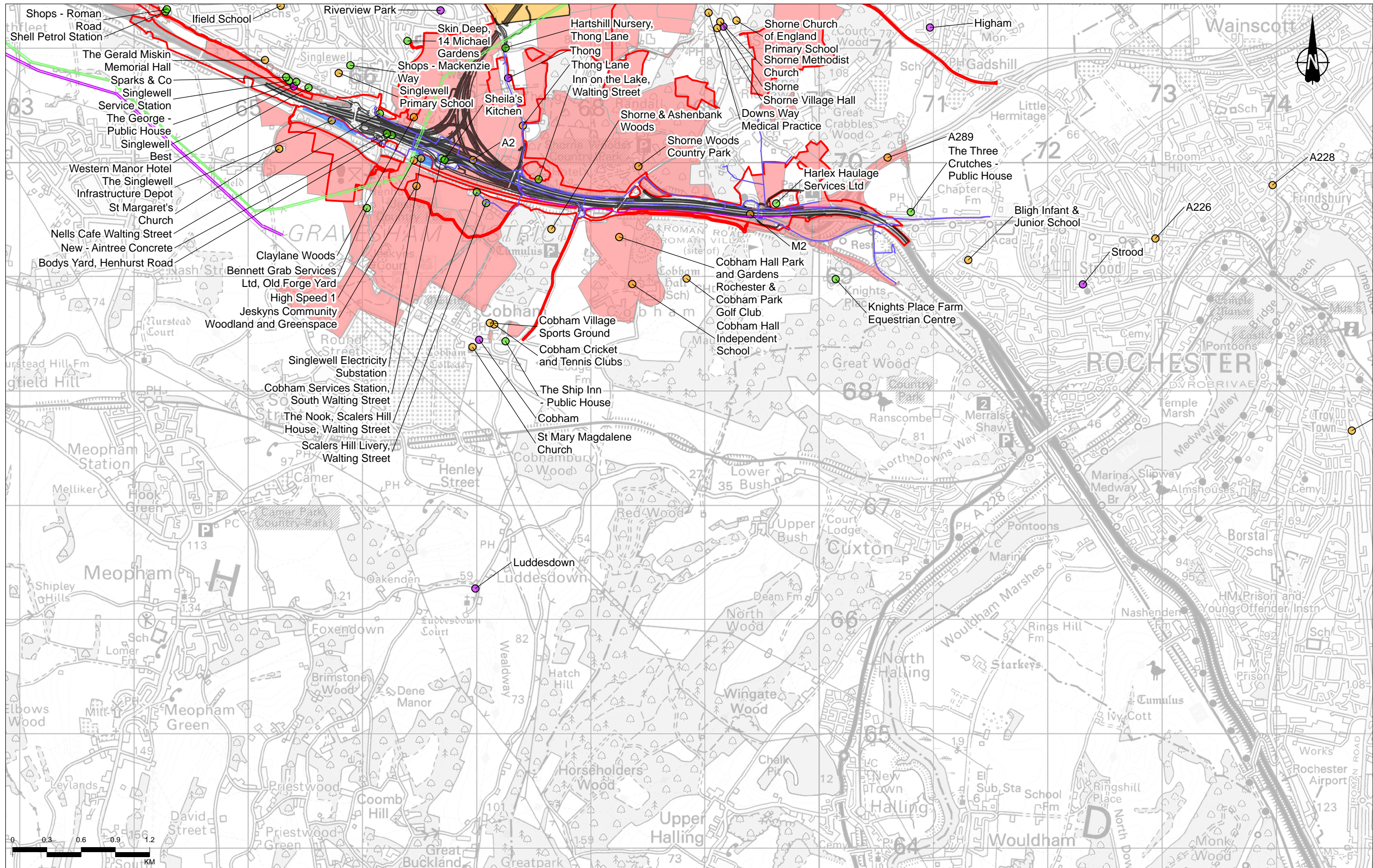
APFP Regulation 5(2)(a)  
Infrastructure Planning  
(Applications: Prescribed Forms and Procedure)  
Regulations 2009  
Volume 6

**DATE:** October 2022

Planning Inspectorate Scheme Ref: TR010032  
Application Document Ref: TR010032/APP/6.2

**VERSION:** 1.0



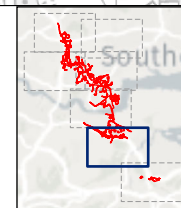


P02	S8	25/10/2022	DCO Application	CD	AS	BF
Rev	Status	Rev. Date	Purpose of revision	Drawn	Chkd	Approved

Legend	
<span style="border: 1px solid red; display: inline-block; width: 10px; height: 10px;"></span>	Order Limits
<span style="border-bottom: 1px solid black; display: inline-block; width: 10px;"></span>	Route alignment
<span style="background-color: #e67e22; display: inline-block; width: 10px; height: 10px;"></span>	Agricultural Land Holdings
<span style="background-color: #3498db; display: inline-block; width: 10px; height: 10px;"></span>	Utility Infrastructure
<span style="border-bottom: 1px dashed blue; display: inline-block; width: 10px;"></span>	Utility Infrastructure
<span style="background-color: #f1c40f; display: inline-block; width: 10px; height: 10px;"></span>	Community Land & Assets

<span style="background-color: #27ae60; display: inline-block; width: 10px; height: 10px;"></span>	Development Land & Business
<span style="background-color: #9b59b6; display: inline-block; width: 10px; height: 10px;"></span>	Private Property & Housing
<span style="background-color: #f1c40f; display: inline-block; width: 10px; height: 10px;"></span>	Community Land & Assets
<span style="background-color: #27ae60; border: 1px solid black; display: inline-block; width: 10px; height: 10px;"></span>	Development Land & Business
<span style="background-color: #9b59b6; border: 1px solid black; display: inline-block; width: 10px; height: 10px;"></span>	Private Property & Housing

High Voltage Electricity Networks	
<span style="border-bottom: 1px solid cyan; display: inline-block; width: 10px;"></span>	High, 132kV
<span style="border-bottom: 1px solid magenta; display: inline-block; width: 10px;"></span>	High, 11kV
<span style="border-bottom: 1px solid blue; display: inline-block; width: 10px;"></span>	High, 275kV
<span style="border-bottom: 1px solid green; display: inline-block; width: 10px;"></span>	High, 400kV

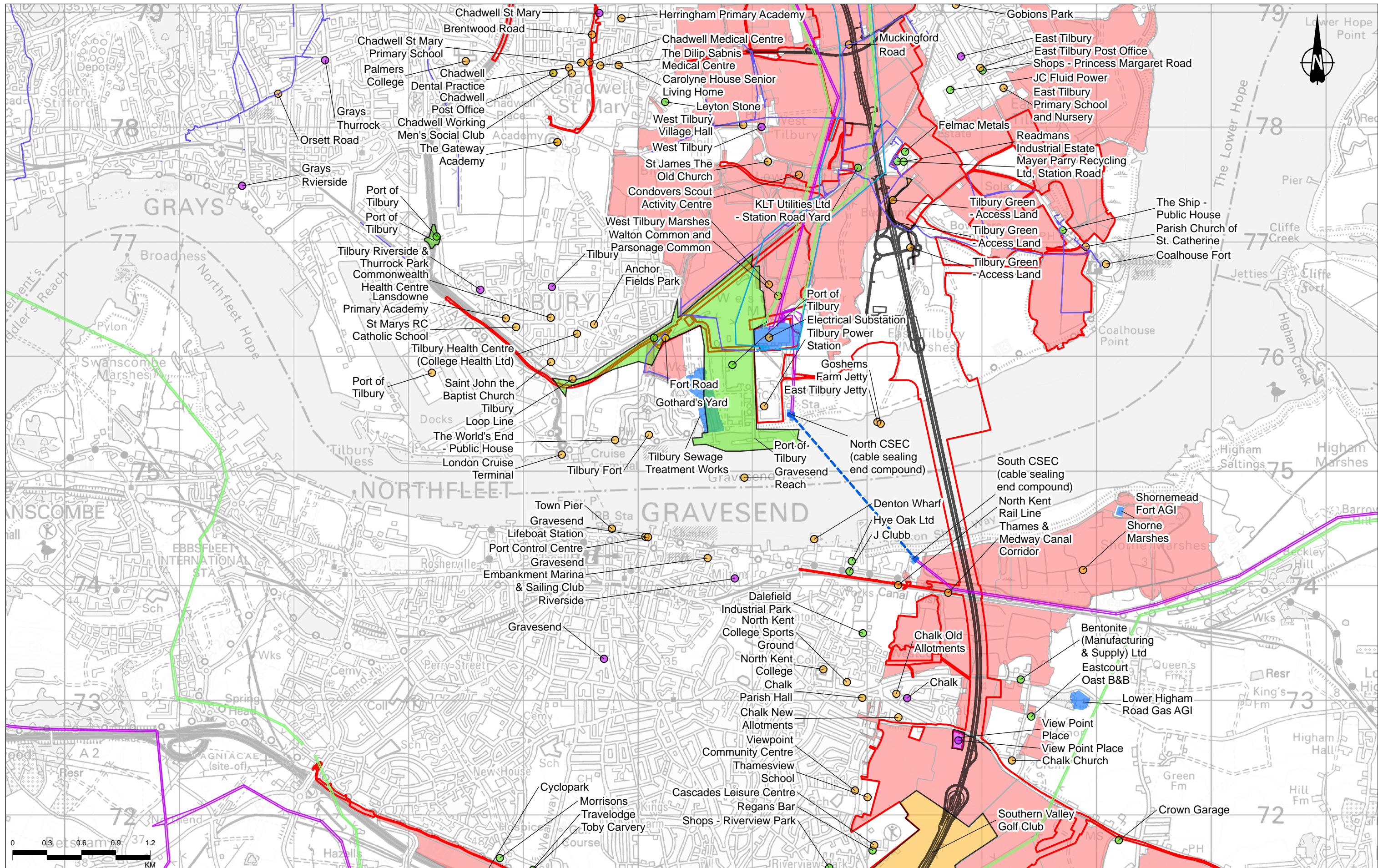


Client: **national highways**

Project: **LOWER THAMES CROSSING**

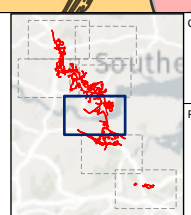
Status	DCO APPLICATION	Original Size	A3	Revision	P02
Application Document Number	TR010032/APP/6.2	Scale	1:30,000		
Drawing Title	Figure 13.1- Population and Human Health Baseline – Private Property & Housing, Development Land & Businesses, Community Land & Asset Page 1 of 7				
Drawing Number	HE540039-CJV -EBD-SZP_EGNE00000000-DR-LE-50130				





P02	S8	25/10/2022	DCO Application	CD	AS	BF
Rev	Status	Rev. Date	Purpose of revision	Drawn	Chkd	Apprvd

Legend	
<span style="border: 1px solid red; display: inline-block; width: 10px; height: 10px;"></span>	Order Limits
<span style="border-bottom: 1px solid black; display: inline-block; width: 20px;"></span>	Route alignment
<span style="background-color: #add8e6; border: 1px solid blue; display: inline-block; width: 10px; height: 10px;"></span>	Agricultural Land Holdings
<span style="background-color: #add8e6; border: 1px solid blue; display: inline-block; width: 10px; height: 10px;"></span>	Utility Infrastructure
<span style="border-bottom: 1px dashed blue; display: inline-block; width: 20px;"></span>	Utility Infrastructure
<span style="background-color: #90ee90; border: 1px solid green; display: inline-block; width: 10px; height: 10px;"></span>	Development Land & Business
<span style="background-color: #800080; border: 1px solid purple; display: inline-block; width: 10px; height: 10px;"></span>	Private Property & Housing
<span style="background-color: #90ee90; border: 1px solid green; display: inline-block; width: 10px; height: 10px;"></span>	Community Land & Assets
<span style="background-color: #90ee90; border: 1px solid green; display: inline-block; width: 10px; height: 10px;"></span>	Development Land & Business
<span style="background-color: #800080; border: 1px solid purple; display: inline-block; width: 10px; height: 10px;"></span>	Private Property & Housing
<span style="border-bottom: 1px solid cyan; display: inline-block; width: 20px;"></span>	High Voltage Electricity Networks
<span style="border-bottom: 1px solid cyan; display: inline-block; width: 20px;"></span>	High, 132kV
<span style="border-bottom: 1px solid magenta; display: inline-block; width: 20px;"></span>	High, 11kV
<span style="border-bottom: 1px solid magenta; display: inline-block; width: 20px;"></span>	High, 275kV
<span style="border-bottom: 1px solid green; display: inline-block; width: 20px;"></span>	High, 400kV



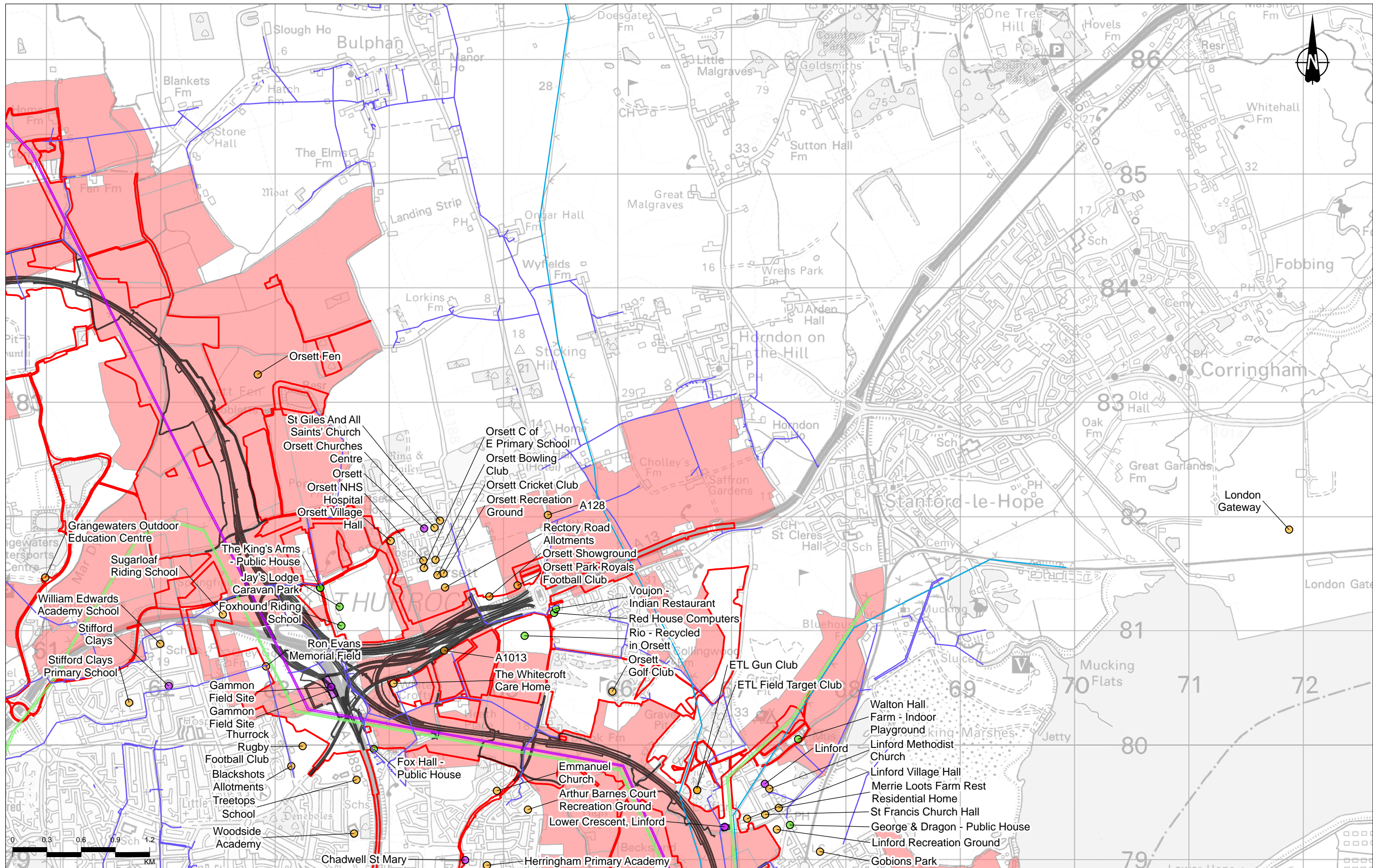
Client: **national highways**

Project: **LOWER THAMES CROSSING**

Status	DCO APPLICATION	Original Size	A3	Revision	P02
Application Document Number	TR010032/APP/6.2	Scale	1:30,000		
Drawing Title	Figure 13.1- Population and Human Health Baseline – Private Property & Housing, Development Land & Businesses, Community Land & Asset Page 2 of 7				
Drawing Number	HE540039-CJV -EBD-SZP_EGNE0000000-DR-LE-50130				

Z:\Environment\Environmental Statements\13. Population and Human Health\HE540039-CJV-EGN-SZP\_EGNE0000000-DR-LE-50130 - 13\_1.aprx



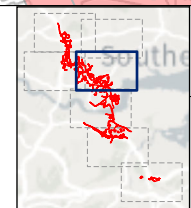


P02	S8	25/10/2022	DCO Application	CD	AS	BF
Rev	Status	Rev. Date	Purpose of revision	Drawn	Checked	Approved

	Order Limits
	Route alignment
	Agricultural Land Holdings
	Utility Infrastructure
	Utility Infrastructure
	Community Land & Assets

	Development Land & Business
	Private Property & Housing
	Community Land & Assets
	Development Land & Business
	Private Property & Housing

<b>High Voltage Electricity Networks</b>	
	High, 132kV
	High, 11kV
	High, 275kV
	High, 400kV



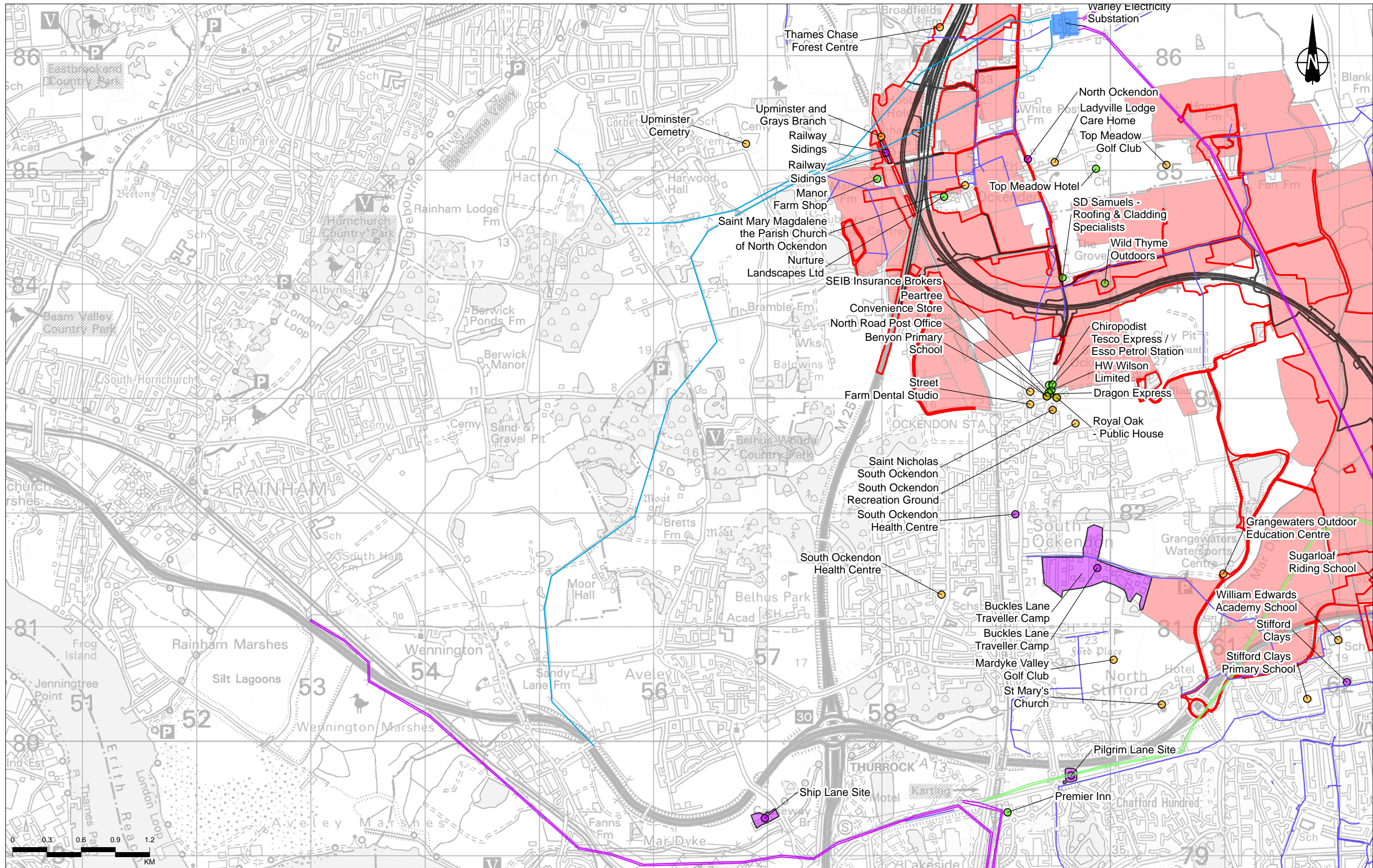
Client: national highways

Project: LOWER THAMES CROSSING

Status	DCO APPLICATION	Original Size	A3	Revision	P02
Application Document Number	TR010032/APP/6.2	Scale	1:30,000		
Drawing Title	Figure 13.1- Population and Human Health Baseline – Private Property & Housing, Development Land & Businesses, Community Land & Asset Page 3 of 7				
Drawing Number	HE540039-CJV -EBD-SZP_EGNE0000000-DR-LE-50130				

Z:\Environment\Environmental Statements\13. Population and Human Health\HE540039-CJV-EGN-SZP\_EGNE0000000-DR-LE-50130 - 13\_1.aprx





P02	S8	25/10/2022	DCO Application	CD	AS	BF
Rev	Status	Rev. Date	Purpose of revision	Drawn	Chkd	Apprvd

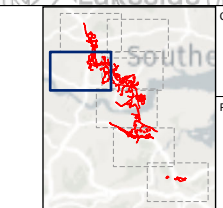
**Legend**

- Order Limits
- Route alignment
- Agricultural Land Holdings
- Utility Infrastructure
- Utility Infrastructure
- Community Land & Assets

- Development Land & Business
- Private Property & Housing
- Community Land & Assets
- Development Land & Business
- Private Property & Housing

**High Voltage Electricity Networks**

- High, 132kV
- High, 11kV
- High, 275kV
- High, 400kV



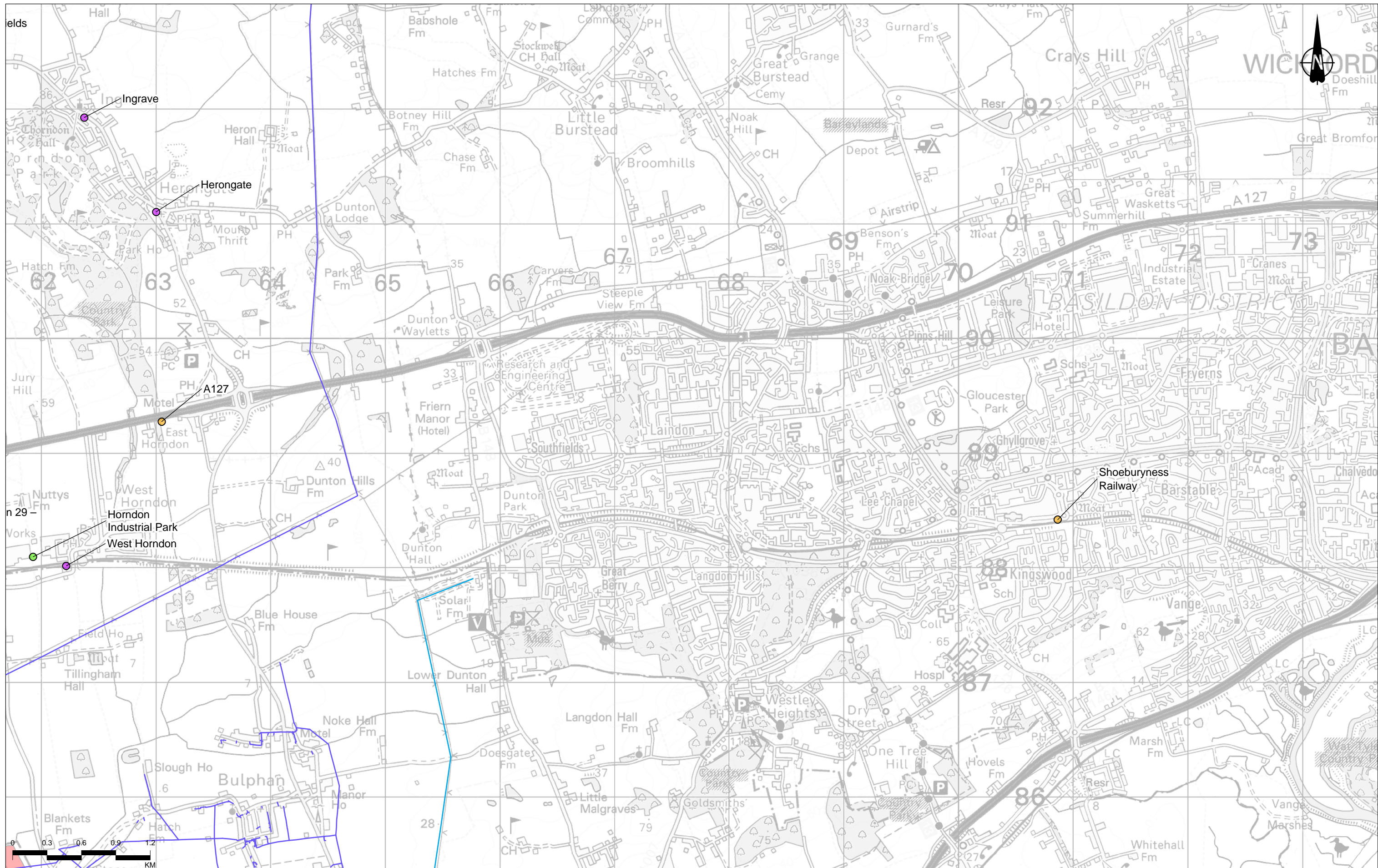
Client: **national highways**

Project: **LOWER THAMES CROSSING**

Status	DCO APPLICATION	Original Size	A3	Revision	P02
Application Document Number	TR010032/APP/6.2	Scale	1:30,000		
Drawing Title	Figure 13.1- Population and Human Health Baseline – Private Property & Housing, Development Land & Businesses, Community Land & Asset Page 4 of 7				
Drawing Number	HE540039-CJV -EBD-SZP_EGNE00000000-DR-LE-50130				

Z:\Environment\Environmental Statements\13. Population and Human Health\HE540039-CJV-EGN-SZP\_EGNE00000000-DR-LE-50130 - 13\_1.aprx





Contains Ordnance Survey data. © Crown copyright and database rights 2022. Ordnance Survey 100030649

P02	S8	25/10/2022	DCO Application	CD	AS	BF
Rev	Status	Rev. Date	Purpose of revision	Drawn	Checked	Approved

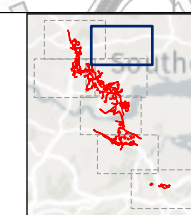
**Legend**

	Order Limits
	Route alignment
	Agricultural Land Holdings
	Utility Infrastructure
	Utility Infrastructure
	Community Land & Assets

	Development Land & Business
	Private Property & Housing
	Community Land & Assets
	Development Land & Business
	Private Property & Housing

**High Voltage Electricity Networks**

	High, 132kV
	High, 11kV
	High, 275kV
	High, 400kV



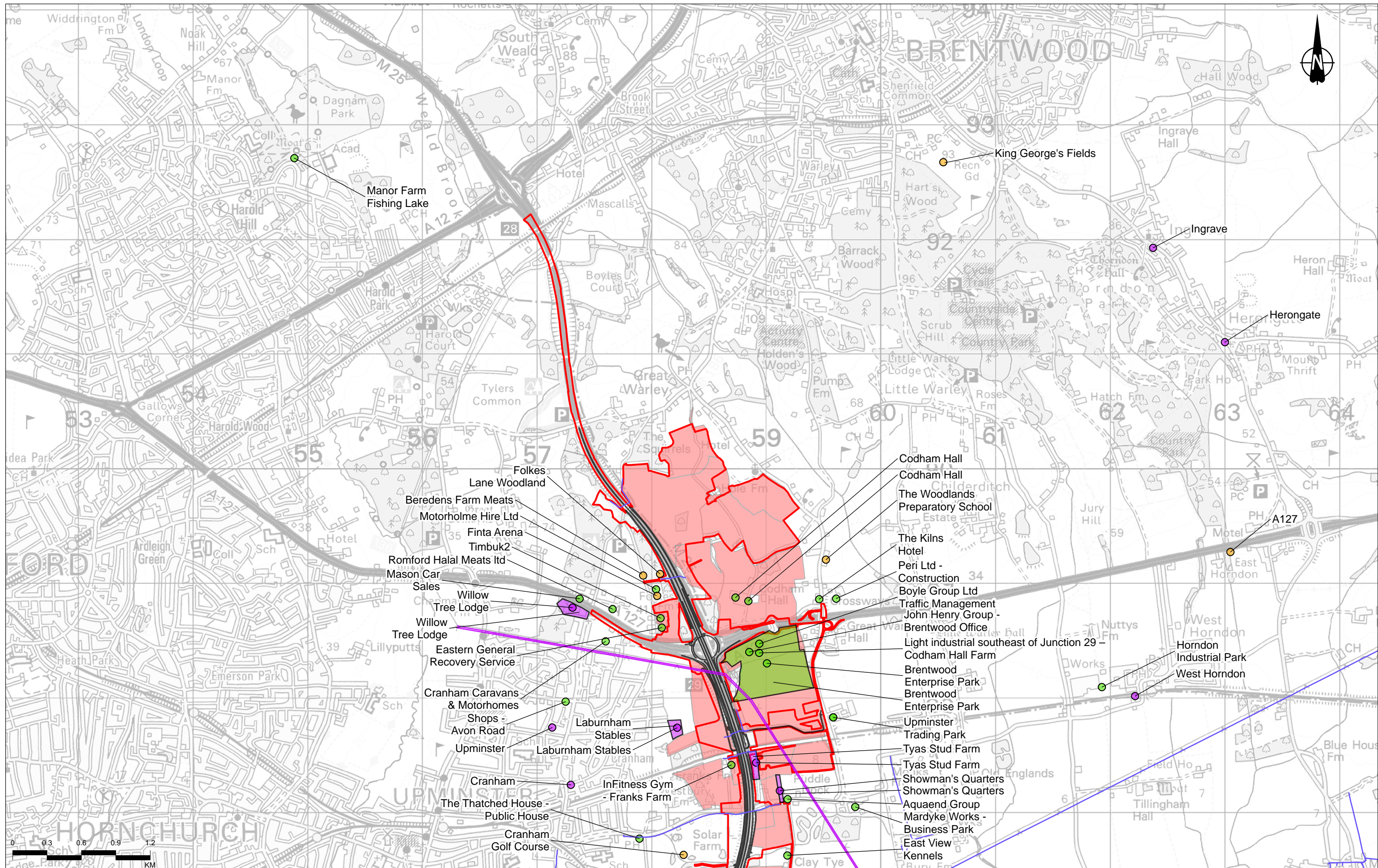
Client: national highways

Project: LOWER THAMES CROSSING

Status	DCO APPLICATION	Original Size	A3	Revision	P02
Application Document Number	TR010032/APP/6.2	Scale	1:30,000		
Drawing Title	Figure 13.1- Population and Human Health Baseline – Private Property & Housing, Development Land & Businesses, Community Land & Asset Page 5 of 7				
Drawing Number	HE540039-CJV -EBD-SZP_EGNE00000000-DR-LE-50130				

Z:\Environment\Environmental Statements\13. Population and Human Health\HE540039-CJV-EGN-SZP\_EGNE00000000-DR-LE-50130 - 13\_1.aprx





Contains Ordnance Survey data. © Crown copyright and database rights 2022. Ordnance Survey 100030649

Rev	Status	Rev. Date	Purpose of revision	Drawn	Checked	Approved
P02	S8	25/10/2022	DCO Application	CD	AS	BF

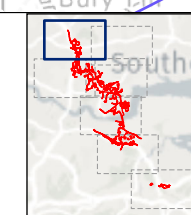
**Legend**

- Order Limits
- Route alignment
- Agricultural Land Holdings
- Utility Infrastructure
- Utility Infrastructure
- Community Land & Assets

- Development Land & Business
- Private Property & Housing
- Community Land & Assets
- Development Land & Business
- Private Property & Housing

**High Voltage Electricity Networks**

- High, 132kV
- High, 11kV
- High, 275kV
- High, 400kV



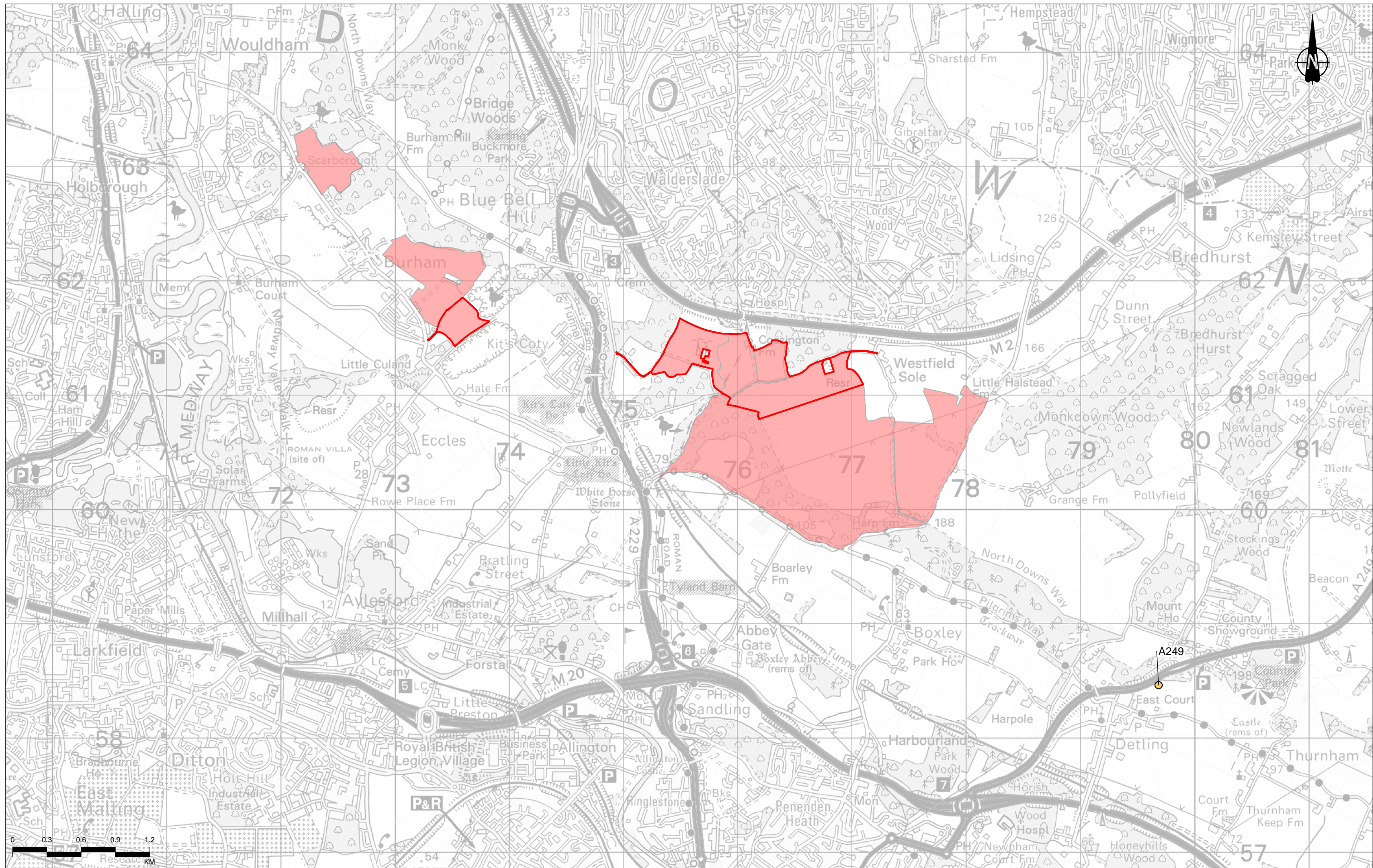
Client: national highways

Project: LOWER THAMES CROSSING

Status	DCO APPLICATION	Original Size	A3	Revision	P02
Application Document Number	TR010032/APP/6.2	Scale	1:30,000		
Drawing Title	Figure 13.1- Population and Human Health Baseline – Private Property & Housing, Development Land & Businesses, Community Land & Asset Page 6 of 7				
Drawing Number	HE540039-CJV -EBD-SZP_EGNE00000000-DR-LE-50130				

Z:\Environment\Environmental Statements\13. Population and Human Health\HE540039-CJV-EGN-SZP\_EGNE00000000-DR-LE-50130 - 13\_1.aprx





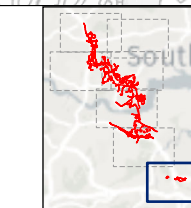
Contains Ordnance Survey data. © Crown copyright and database rights 2022. Ordnance Survey 100030649

P02	S8	25/10/2022	DCO Application	CD	AS	BF
Rev	Status	Rev. Date	Purpose of revision	Drawn	Checked	Approved

- Legend**
- Order Limits
  - Route alignment
  - Agricultural Land Holdings
  - Development Land & Business
  - Utility Infrastructure
  - Community Land & Assets

- Development Land & Business
- Private Property & Housing
- Community Land & Assets
- Development Land & Business
- Private Property & Housing

- High Voltage Electricity Networks**
- High, 132kV
  - High, 11kV
  - High, 275kV
  - High, 400kV



Client: **national highways**

Project: **LOWER THAMES CROSSING**

Status	DCO APPLICATION	Original Size	A3	Revision	P02
Application Document Number	TR010032/APP/6.2	Scale	1:30,000		
Drawing Title	Figure 13.1- Population and Human Health Baseline – Private Property & Housing, Development Land & Businesses, Community Land & Asset Page 7 of 7				
Drawing Number	HE540039-CJV -EBD-SZP_EGNE00000000-DR-LE-50130				

Z:\Environment\Environmental Statements\13. Population and Human Health\HE540039-CJV-EGN-SZP\_EGNE00000000-DR-LE-50130 - 13\_1.aprx



If you need help accessing this or any other National Highways information, please call **0300 123 5000** and we will help you.

© Crown copyright 2022.

You may re-use this information (not including logos) free of charge in any format or medium, under the terms of the Open Government Licence. To view this licence:

visit [www.nationalarchives.gov.uk/doc/open-government-licence/](http://www.nationalarchives.gov.uk/doc/open-government-licence/)

write to the **Information Policy Team, The National Archives, Kew, London TW9 4DU**, or email [psi@nationalarchives.gsi.gov.uk](mailto:psi@nationalarchives.gsi.gov.uk).

Mapping (where present): © Crown copyright and database rights 2022 OS 100030649. You are permitted to use this data solely to enable you to respond to, or interact with, the organisation that provided you with the data. You are not permitted to copy, sub-license, distribute or sell any of this data to third parties in any form.

If you have any enquiries about this publication email [info@nationalhighways.co.uk](mailto:info@nationalhighways.co.uk) or call **0300 123 5000\***.

\*Calls to 03 numbers cost no more than a national rate call to an 01 or 02 number and must count towards any inclusive minutes in the same way as 01 and 02 calls. These rules apply to calls from any type of line including mobile, BT, other fixed line or payphone. Calls may be recorded or monitored.

Printed on paper from well-managed forests and other controlled sources when issued directly by National Highways.

Registered office Bridge House, 1 Walnut Tree Close, Guildford GU1 4LZ

National Highways Company Limited registered in England and Wales number 09346363